

Aughton Christ Church C of E Primary School

“A CARING CHRISTIAN COMMUNITY”



Sketch Designs
School Grounds
Development



We are currently focussing on developing the following key areas of our school grounds:

1. Back Entrance Area of School

Regraded access path from KS1 and KS2 drop-off

2. Back of school—Outdoor Library Area

Resurfaced outdoor teaching area with two tones of coloured tarmac, amphitheatre and stepped access to playing fields

Remove shrubs and resurface with bark mulch / grass seed

3. EYFS entrance and Forest Area

Resurfaced and reconfigured Reception Forest School

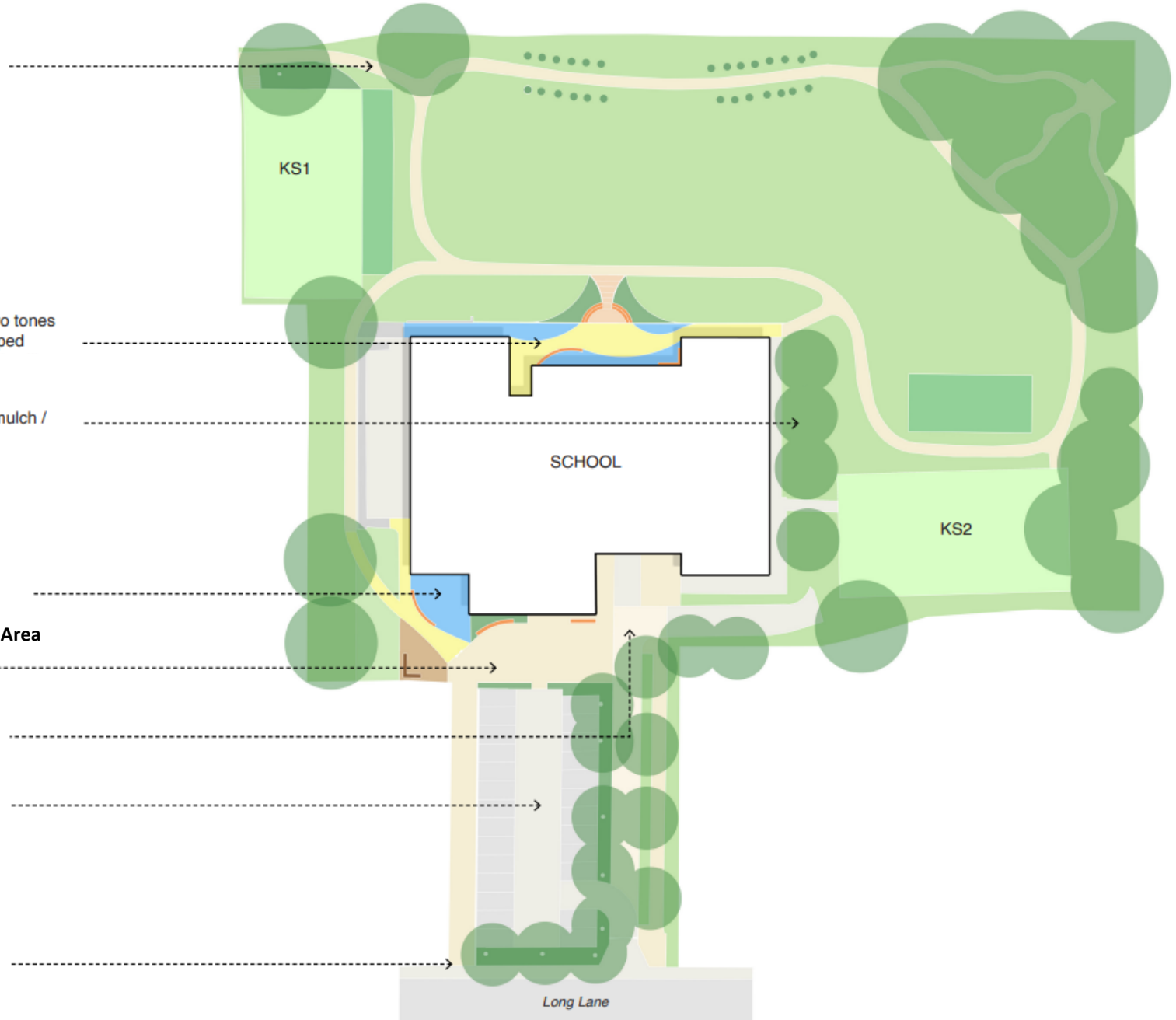
4. Front of School Car Park and Collection Area

Proposed resurfaced concourse with seating and planting beds

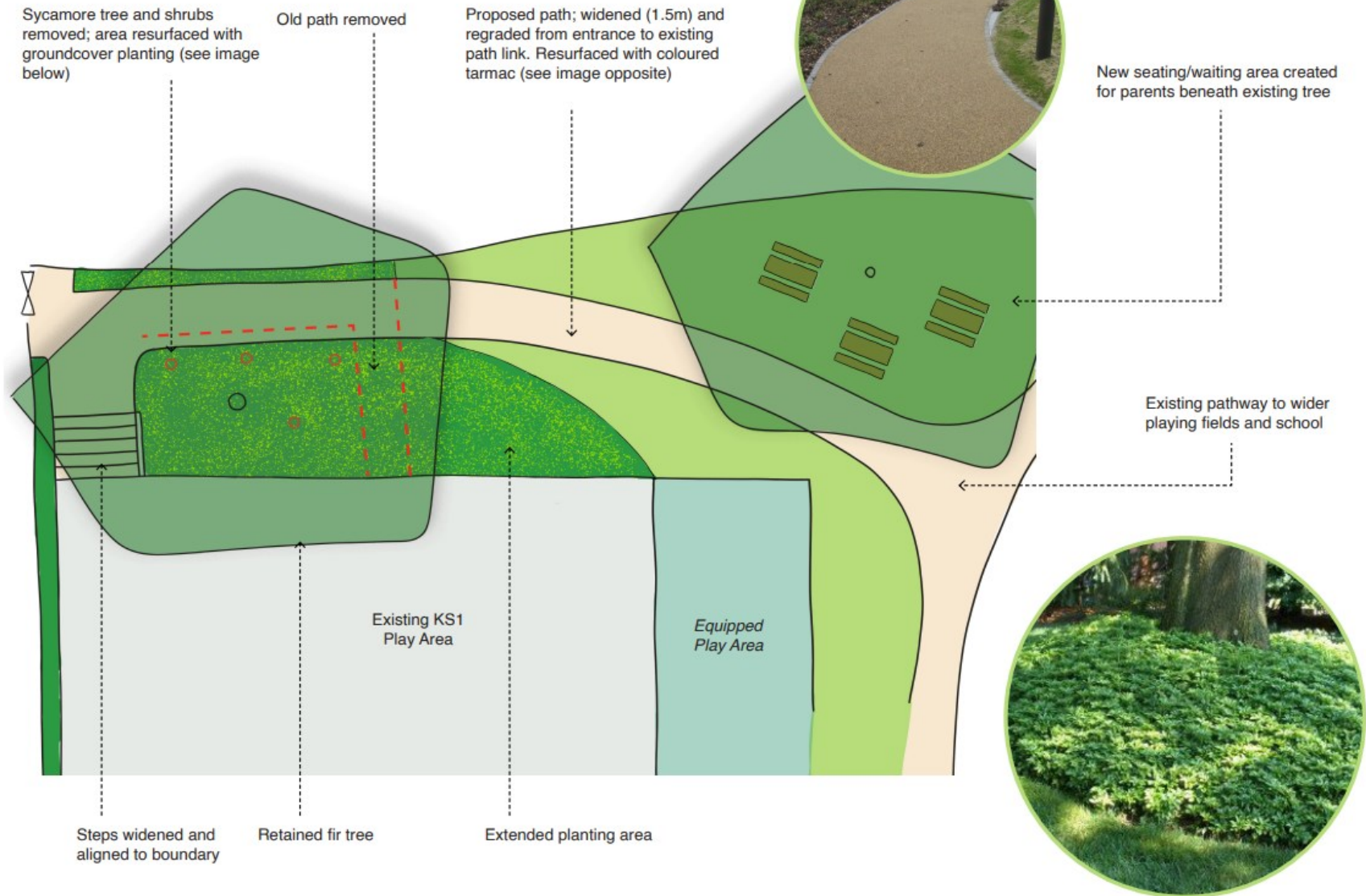
Proposed shared surface / pedestrian crossing zone

Reconfigured car park (TBC)

Proposed pedestrian entrance (requiring 1no. tree removal)



1. Back Entrance Area of School



Sycamore tree and shrubs removed; area resurfaced with groundcover planting (see image below)

Old path removed

Proposed path; widened (1.5m) and regraded from entrance to existing path link. Resurfaced with coloured tarmac (see image opposite)

New seating/waiting area created for parents beneath existing tree

Existing pathway to wider playing fields and school

Existing KS1 Play Area

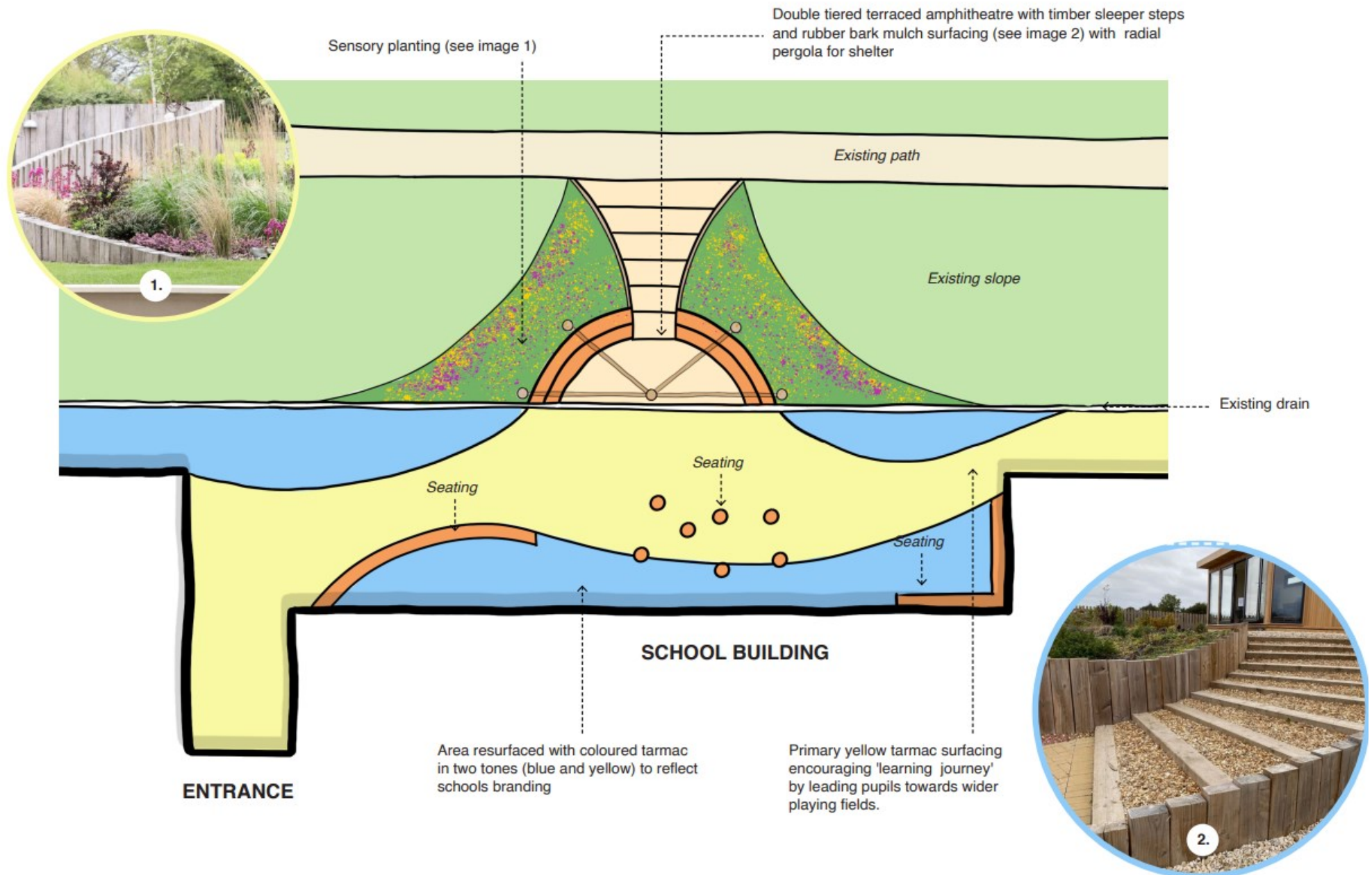
Equipped Play Area

Steps widened and aligned to boundary

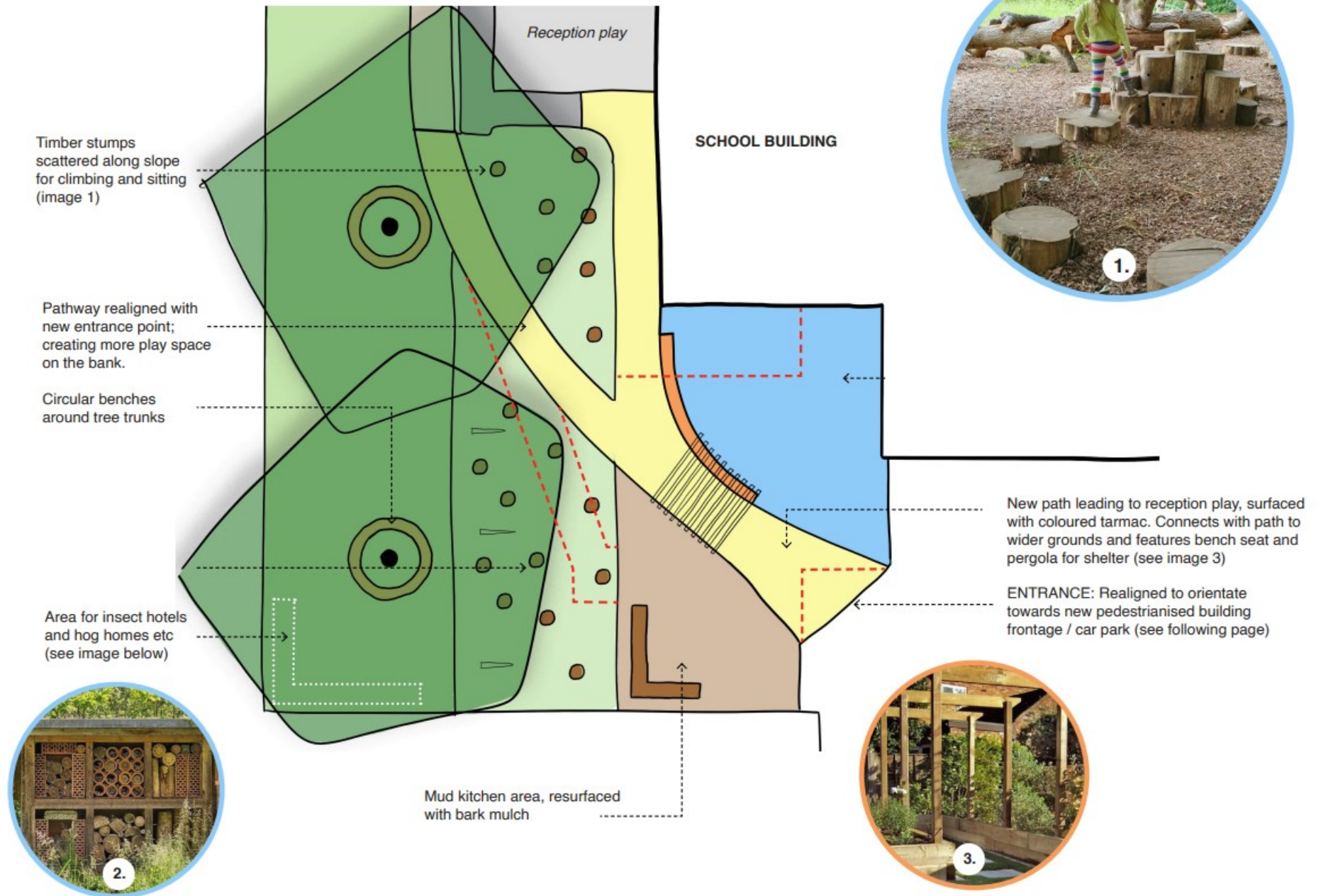
Retained fir tree

Extended planting area

2. Back of School—Outdoor Library Area

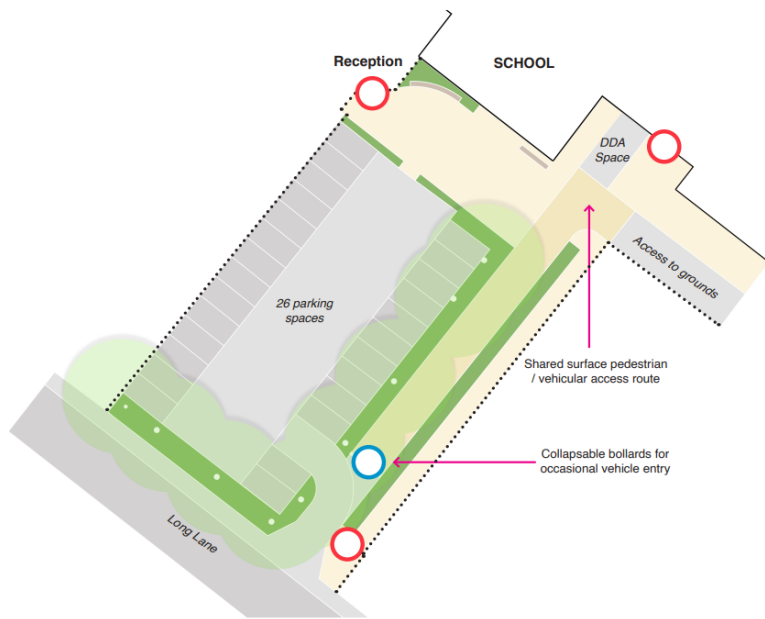


3. EYFS Entrance and Forest Area



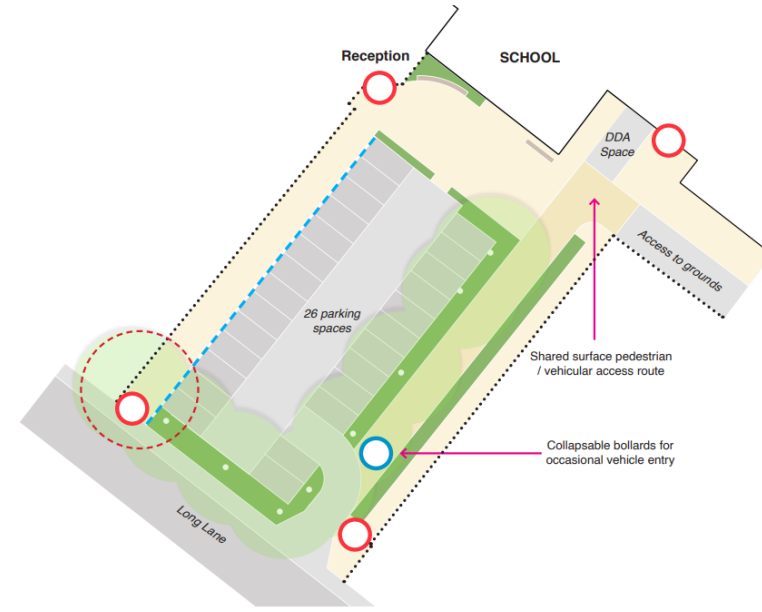
4. Front of School Car Park and Collection Area

Option A



- KEY:**
- Vehicular access
 - Pedestrian access
 - Pedestrian surfacing
 - Vehicular surfacing
 - Planting
 - Seating

Option B



- KEY:**
- Vehicular access
 - Pedestrian access
 - - - Knee rail
 - - - Tree removal
 - Pedestrian surfacing
 - Vehicular surfacing
 - Planting
 - Seating